

# hosfelt gallery

BRUCE CONNER + JESS

*The Virtue of Uncertainty*

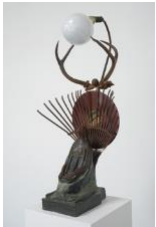
September 5 - October 14 2023



**Jess** (1923-2004)  
*Untitled*, 1966  
ink on paper  
13 1/2 x 10 1/2 in  
34.3 x 26.7 cm



**Bruce Conner** (1933-2008)  
*TEMPLES*, 1963  
ink on paper  
14 x 10 7/8 in  
35.6 x 27.6 cm



**Jess** (1923-2004)  
*Assembly Lamp*, circa 1963  
mixed media assemblage  
31 1/4 x 15 x 16 in  
79.4 x 38.1 x 40.6 cm



**Jess** (1923-2004)  
*One of the Norns Is Dead*, 1955/71  
oil on canvas in artist's frame  
33 1/4 x 47 1/4 in  
84.5 x 120 cm

260 Utah Street  
San Francisco CA 94103  
415 495 5454  
hosfeltgallery.com

# hosfelt gallery



**Bruce Conner** (1933-2008)  
UNTITLED AUGUST 7, 1975, 1975  
pen and Pelikan ink on paper  
22 1/8 x 29 7/8 in  
56.2 x 75.9 cm



**Jess** (1923-2004)  
*Sea Cove*, 1952  
oil on canvas in artist's velvet  
wrapped frame  
frame 19 1/2 x 25 1/2 in / 49.5 x  
64.8 cm



**Jess** (1923-2004)  
*Self-Portrait*, early 1950s  
handmade oil and wax crayon on paper  
in artist's frame  
image 12 x 9 in / 30.5 x 22.9 cm  
frame 20 x 16 1/2 in / 50.8 x 41.9 cm



**Bruce Conner** (1933-2008)  
SELF-PORTRAIT, 1991  
graphite on paper  
14 7/8 x 14 7/8 in  
37.8 x 37.8 cm



**Bruce Conner** (1933-2008)  
PRIMAVERA, 1959  
mixed media assemblage  
9 1/4 x 16 in  
23.5 x 40.6 cm



**Bruce Conner** (1933-2008)  
PERSEPHONE, 1956  
oil and collage  
12 x 8 in  
30.5 x 20.3 cm

# hosfelt gallery



**Jess** (1923-2004)  
*Cover for Credences 3*, 1975  
pasteup  
10 1/4 x 20 1/2 in  
26 x 52.1 cm



**Bruce Conner** (1933-2008)  
*SICK LADY*, 1958  
photographs, fabric, brocade, nylon,  
metal flower on board  
6 1/2 x 6 1/2 in  
16.5 x 16.5 cm



**Bruce Conner** (1933-2008)  
*UNTITLED MAY 2*, 1968, 1968  
ink on paper  
17 7/8 x 15 1/8 in  
45.4 x 38.4 cm



**Bruce Conner** (1933-2008)  
*BIRTH OF VENUS*, 1959  
paper, gold foil, metal tacks, shell,  
beads, fabric, thread, hair, twine,  
cherry pit, cigarette butt, glass,  
metal, plastic, fabric and nylon  
stocking on Masonite  
12 x 9 1/2 in  
30.5 x 24.1 cm



**Jess** (1923-2004)  
*Song of the Borderguard*, c. 1955  
ink on paper  
13 x 10 1/2 in  
33 x 26.7 cm

# hosfelt gallery



**Jess** (1923-2004)  
*Unkingd by Affection?*, 1963  
ink on paper  
13 x 10 1/4 in  
33 x 26 cm



**Jess** (1923-2004)  
*Lurid VII*, 1963  
handmade oil and wax crayon on  
Japanese paper  
15 3/4 x 12 1/4 in  
40 x 31.1 cm



**Jess** (1923-2004)  
*Prison Isle*, 1954  
oil on canvas on board in artist's  
frame  
frame 13 x 17 in / 33 x 43.2 cm



**Bruce Conner** (1933-2008)  
UNTITLED 3/7/55, 1955  
oil on masonite in artist's frame  
12 x 9 in  
30.5 x 22.9 cm



**Jess** (1923-2004)  
*Untitled (Handbill)*, 1951  
pasteup and ink on paper in artist's  
frame  
image 7 3/4 x 5 in / 19.7 x 12.7 cm  
frame 10 x 7 1/4 in / 25.4 x 18.4 cm



**Bruce Conner** (1933-2008)  
UNTITLED FEBRUARY 28, 1967, 1967  
ink on paper  
13 1/4 x 11 in  
33.7 x 27.9 cm

# hosfelt gallery



**Jess** (1923-2004)  
*Stillbourne*, c. 1951  
oil on canvas with artist's velvet  
trim at edges  
51 x 39 1/2 in  
129.5 x 100.3 cm



**Jess** (1923-2004)  
*Assembly Lamp #7*, 1963  
mixed media assemblage  
29 x 18 x 18 in  
73.7 x 45.7 x 45.7 cm



**Bruce Conner** (1933-2008)  
*MOM'S COLLAGE*, 1961  
mixed media assemblage  
24 x 11 x 6 in  
61 x 27.9 x 15.2 cm



**Jess** (1923-2004)  
*Robert Weaving*, 1953  
handmade oil and wax crayon on paper  
10 x 12 in  
25.4 x 30.5 cm

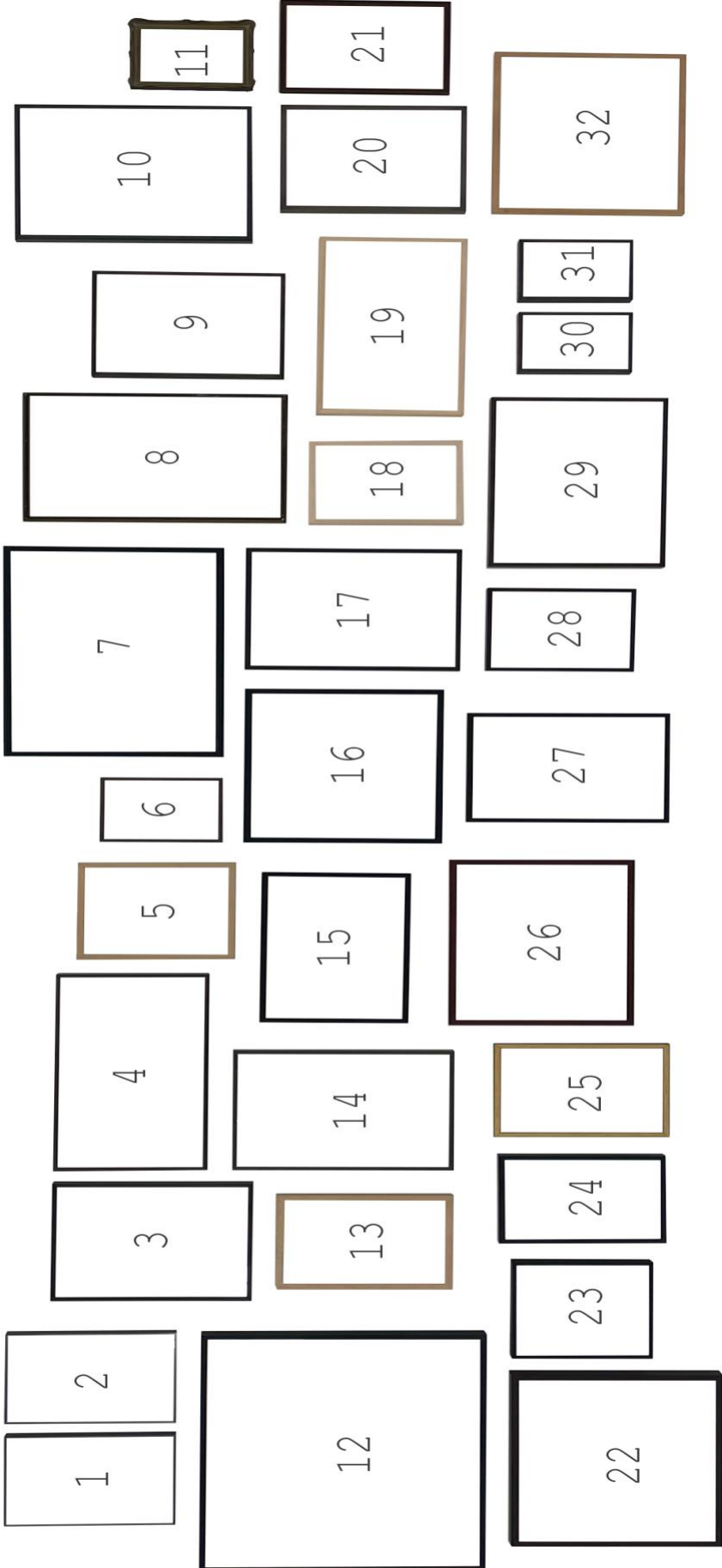


**Bruce Conner** (1933-2008)  
*VALENTINE*, 1958  
mixed media assemblage  
13 x 12 x 2 1/4 in  
33 x 30.5 x 5.7 cm



**Bruce Conner** (1933-2008)  
*UNTITLED (1914 KANSAS STATE FAIR  
ADDRESS BOOK)*, c. 1965  
mixed media assemblage  
8 x 5 1/4 x 1/2 in  
20.3 x 13.3 x 1.3 cm

# hosfelt gallery



260 Utah Street  
San Francisco CA 94103  
415 495 5454  
hosfeltgallery.com



# hosfelt gallery



**1. Jess** (1923-2004)  
*Emblems for Robert Duncan II: #5, "Do you know the old language"*, 1989  
pasteup  
6 x 5 3/4 in  
15.2 x 14.6 cm



**2. Jess** (1923-2004)  
*Emblems for Robert Duncan II: #2, "into the troubled childish day"*, 1989  
pasteup  
6 x 5 3/4 in  
15.2 x 14.6 cm



**3. Jess** (1923-2004)  
*Share a Party Line?*, n.d.  
pasteup  
10 3/4 x 8 1/2 in  
27.3 x 21.6 cm

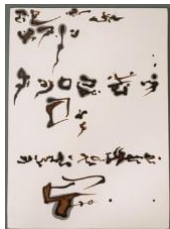


**4. Jess** (1923-2004)  
*In the Sunnd 'nd Row Did a Dead Deed Drone Over Bolder...Nnnnnno!*, n.d.  
ink on paperboard  
7 1/2 x 19 3/4 in  
19.1 x 50.2 cm



**5. Jess** (1923-2004)  
*Mystic Writing XI*, 1955  
handmade oil and wax crayon on paper  
11 x 10 in  
27.9 x 25.4 cm

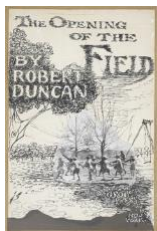
# hosfelt gallery



**6. Bruce Conner** (1933-2008)  
UNTITLED, 1993  
ink on clayboard  
7 x 5 in  
17.8 x 12.7 cm



**7. Jess** (1923-2004)  
*Adam's Song, from Robert Duncan's 'A Book of Resemblances'*, 1966  
ink on paper (2)  
overall 13 x 22 in / 33 x 55.9 cm



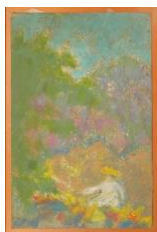
**8. Jess** (1923-2004)  
*The Opening of the Field*, 1960  
ink and pasteup  
16 x 10 1/2 in  
40.6 x 26.7 cm



**9. Bruce Conner** (1933-2008)  
UNTITLED (TYPEWRITER DRAWING), 1962  
typewriter ink on paper  
12 x 8 3/4 in  
30.5 x 22.2 cm



**10. Jess** (1923-2004)  
*Cover for The Tenth Muse #15*, 1967  
ink on paper  
11 1/2 x 8 3/4 in  
29.2 x 22.2 cm



**11. Jess** (1923-2004)  
*Meadow Sweet*, n.d.  
handmade oil and wax crayon on  
paperboard in artist's frame  
6 1/2 x 4 1/4 in  
16.5 x 10.8 cm



# hosfelt gallery



**12. Jess** (1923-2004)  
*Untitled (with Joan Crawford Head),*  
1952-53  
pasteup  
18 x 23 1/2 in  
45.7 x 59.7 cm



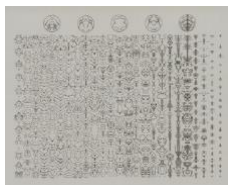
**13. Bruce Conner** (1933-2008)  
*UNTITLED AUGUST 20, 1981, 1981*  
paper collage  
6 1/2 x 4 1/2 in  
16.5 x 11.4 cm



**14. Bruce Conner** (1933-2008)  
*TYPEWRITER DRAWING, c. 1961*  
typewriter ink on paper  
12 3/4 x 9 1/4 in  
32.4 x 23.5 cm



**15. Jess** (1923-2004)  
*Cover for Credences 8/9, c. 1980*  
pasteup  
9 3/4 x 16 1/4 in  
24.8 x 41.3 cm



**16. Anonymouse**  
*INKBLOT DRAWING OCTOBER 26, 1999,*  
1999  
ink and pencil on paper  
12 1/4 x 19 1/2 in  
31.1 x 49.5 cm



**17. Bruce Conner** (1933-2008)  
*UNTITLED MEXICO 1961, 1961*  
ink on paper  
11 x 8 3/8 in  
27.9 x 21.3 cm

# hosfelt gallery



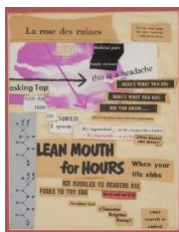
**18. Bruce Conner** (1933-2008)  
UNTITLED, c. 2000  
photocopy collage  
6 1/2 x 4 1/2 in  
16.5 x 11.4 cm



**19. Jess** (1923-2004)  
*Untitled (It Chanced on a Time)*, n.d.  
pasteup poem  
6 x 16 in  
15.2 x 40.6 cm



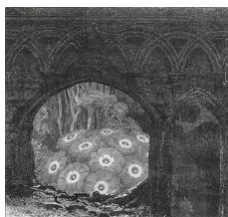
**20. Jess** (1923-2004)  
*Untitled (Four Women on Park Bench)*,  
*illustration for Caesar's Gate*, 1955  
pasteup  
8 1/2 x 6 1/2 in  
21.6 x 16.5 cm



**21. Jess** (1923-2004)  
*Untitled (Lean Mouth)*, 1953  
pasteup poem  
10 3/4 x 8 1/4 in  
27.3 x 21 cm



**22. Jess** (1923-2004)  
*Boob #1*, 1952  
pasteup  
12 3/4 x 16 1/2 in  
32.4 x 41.9 cm



**23. Bruce Conner** (1933-2008)  
UNTITLED, 2005  
photocopy collage  
5 7/8 x 6 1/4 in  
14.9 x 15.9 cm

# hosfelt gallery



**24. Bruce Conner** (1933-2008)  
VIEW FROM THE LIBRARY WINDOW, c. 2005  
photocopy collage  
7 5/8 x 5 in  
19.4 x 12.7 cm



**25. Bruce Conner** (1933-2008)  
UNTITLED, JULY 7, 1993, 1993  
engraving collage  
3 1/8 x 2 3/4 in  
7.9 x 7 cm



**26. Jess** (1923-2004)  
*If Word Wallower Best*, n.d.  
word collage in red and black ink  
(double-sided)  
11 1/4 x 17 in  
28.6 x 43.2 cm



**27. Bruce Conner** (1933-2008)  
UNTITLED (LOVE YES YES) MARCH 11,  
1962, 1962  
ink on paper  
12 x 9 in  
30.5 x 22.9 cm



**28. Jess** (1923-2004)  
*Sparrow Spring*, n.d.  
pasteup and ink  
10 1/2 x 8 1/2 in  
26.7 x 21.6 cm

# hosfelt gallery



**29. Jess** (1923-2004)  
*A Break-Down Make-Up of the Hole in the World, 1950s*  
ink, handmade oil and wax crayon, and  
pasteup on paperboard (2)  
overall 10 x 16 1/2 in / 25.4 x 41.9  
cm



**30. Bruce Conner** (1933-2008)  
DECK: TEXT CARD, NEST / SHAPE, 1975  
ink and press-on-type on paper  
6 x 4 in  
15.2 x 10.2 cm



**31. Bruce Conner** (1933-2008)  
DECK: TEXT CARD, MOON / NASTURTIUM,  
1975  
ink and press-on-type on paper  
6 x 4 in  
15.2 x 10.2 cm



**32. Bruce Conner** (1933-2008)  
*THE PIANOFORTE SISTERS MARCH 13,*  
1992, 1992  
engraving collage  
10 x 14 1/2 in  
25.4 x 36.8 cm

# hosfelt gallery



**Bruce Conner** (1933-2008)  
UNTITLED JANUARY 29, 1986, 1986  
engraving collage  
9 1/2 x 7 1/2 in  
24.1 x 19.1 cm



**Jess** (1923-2004)  
*Untitled (Black Sphere with Rope)*,  
*illustration for Caesar's Gate*, 1955  
pasteup in artist's frame  
8 1/2 x 6 1/2 in  
21.6 x 16.5 cm



**Jess** (1923-2004)  
*Emblems for Robert Duncan II: #6, "To  
open Night's eye that sleeps in what  
we know by Day"*, 1989  
pasteup  
6 x 5 3/4 in  
15.2 x 14.6 cm



**Bruce Conner** (1933-2008)  
LANDSCAPE SEPTEMBER 21, 1998, 1998  
engraving collage  
6 1/2 x 6 1/2 in  
16.5 x 16.5 cm



**Bruce Conner** (1933-2008)  
UNTITLED, c. 2000  
engraving collage  
6 1/2 x 4 1/2 in  
16.5 x 11.4 cm

# hosfelt gallery



**Bruce Conner** (1933-2008)  
UNTITLED NOVEMBER 5, 1963, 1963  
ink on paper  
26 1/4 x 20 in  
66.5 x 50.8 cm



**Bruce Conner** (1933-2008)  
DR. D MAY 10, 1990, 1990  
engraving collage  
11 3/4 x 9 1/4 in  
29.8 x 23.5 cm



**Jess** (1923-2004)  
*Untitled (Suited Man Holding Key)*,  
1955  
pasteup in artist's frame  
frame 13 1/2 x 10 3/4 in / 34.3 x  
27.3 cm



**Jess** (1923-2004)  
*Untitled*, 1962  
mixed media assemblage  
12 x 6 1/2 x 8 in  
30.5 x 16.5 x 20.3 cm



**Jess** (1923-2004)  
*Surrealist Shells*, 1966  
ink on paper  
27 x 10 3/4 in  
68.6 x 27.3 cm



# hosfelt gallery



**Bruce Conner** (1933-2008)  
UNTITLED D-10, 1966  
ink and pencil on paper  
39 1/2 x 25 5/8 in  
100.3 x 65.1 cm